

## Speakers

### **Amy Montgomery, P.Eng.**

Building Science Engineer  
RDH Building Science Inc., Canada

Amy Montgomery is an Associate and Building Science Engineer with RDH Building Science in Toronto. She brings her experience in building science and building energy analysis from projects across North America. Amy's current focus is on supporting the design and construction of high-performance new buildings and the rehabilitation of existing buildings. She has a particular interest in the conservation of historic buildings.



### **Arlin Otto, M.Eng, P.Eng, CAHP (she/her/hers)**

Structural Engineer, Associate  
Tacoma Engineers, Canada

Arlin Otto is a structural engineer specializing in restoration, adaptive reuse and rehabilitation work across South-Western Ontario. She completed her bachelor's degree in architectural conservation and sustainability engineering at Carleton University and her masters at the University of Waterloo with a focus on structural engineering and fire safety engineering. She has been part of the heritage and investigation team at Tacoma Engineers since 2017. Arlin has a keen interest in post disaster and forensic assessments of structures and predominantly works in adaptive reuse. She is an active supporter of the Architectural Conservatory of Ontario (ACO) and APT.



**Jérôme Bédard, Ing., Associé écologique LEED®**

Chargé de projet

Tetra Tech, Canada

M. Bédard se spécialise en réhabilitation sismique depuis 15 ans. Membre de l'Association Canadienne du Génie Parasismique et de la Sismologie, il a agi comme conférencier dans plusieurs universités sur les sujets de la structure du bâtiment et du génie parasismique. Reconnu comme référence par ses pairs et clients, il a réalisé une trentaine d'études sismiques et projets de réhabilitation. Son approche pragmatique favorise des dialogues constructifs avec les professionnels et l'élaboration de solutions innovantes. Sa spécialisation lui procure une vision singulière des bâtiments anciens, pour cibler leurs atouts et les utiliser lors des analyses de réhabilitation.

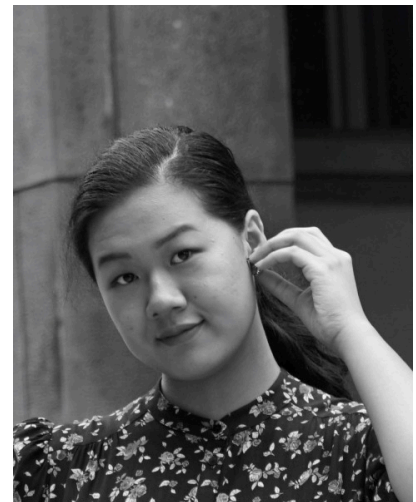


**Janet Li, MArch (she/her/hers)**

Intern Architect

EVOQ Architecture, Canada

Janet Li joined EVOQ Architecture as an Intern Architect after completing her Bachelor of Architectural Studies and Master of Architecture at the University of Waterloo. During her time in co-op, Janet developed an interest in heritage conservation which culminated in her thesis on the phenomenon of Facadism in the City of Toronto. Her time in co-op also allowed for diverse experiences working including new construction, heritage conservation, and sustainability consulting. She has also received her RHFAC Professional certification in 2024, supplementing her commitment to long-lasting, sustainable solutions.



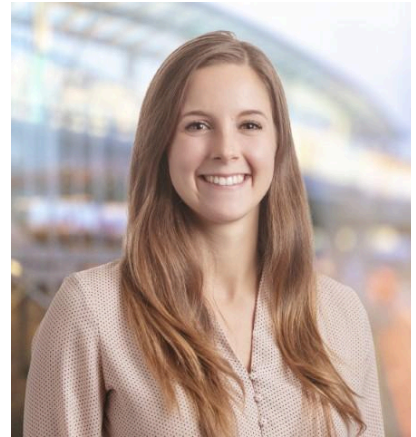
## Moderators

### **Sarah Francisca, M.Sc., B.Eng., EIT, CAHP Intern**

Structural Designer

John G. Cooke & Associates Ltd., Canada

Sarah is the Vice-Chair of APT Canada and is a building conservation engineering designer at John G. Cooke & Associates Ltd. in Hamilton, Ontario. Sarah has worked in the field of heritage conservation engineering for over four years and focuses primarily on the structural review, analysis and design of repairs for existing buildings, with a particular interest in the conservation of historic buildings. Prior to entering the workforce, Sarah completed a Master of Science in the Structural Analysis of Historic Monuments, a joint degree between the University of Minho in Portugal and the Polytechnical University of Catalunya in Spain. Sarah has a strong passion for the conservation of historic buildings, which led to her decision to become an active member of APT Canada.



### **Lena Buchinger, OAQ, ACECP/CAHP**

Architecte, Associate Director

EVOQ Architecture, Canada

Lena Buchinger is the President of APT and APT Canada. She is an accomplished senior conservation architect, Associate Director, and key member of EVOQ Architecture. She has contributed to the award-winning rehabilitation of some of Canada's iconic historic places. As a member of Montreal's South-West Borough Advisory Planning Committee for 9 years, she provided counsel on countless design, preservation, and planning issues. A long-time member and contributor to APT, both at the international and chapter level, Lena was elected to the APT Board of Directors in 2018, and co-chaired APT Québec from 2019-2021. As co-chair of APT Québec, she increased the volunteer base and organized several training events.

